

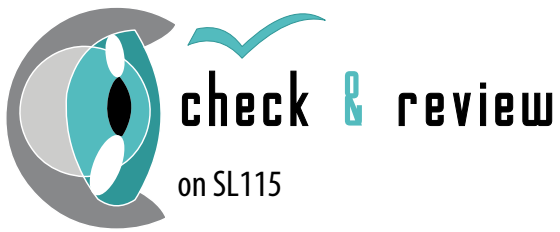


The digital solution

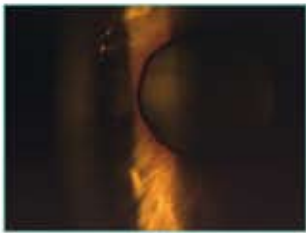
for your approved slit lamp

check & review a digital camera system with capture software combined high resolution images and detailed movies.





It's more simple than you think
and better than expected.



The basic system for an optician.
Adapted to the softly lines of the slitlamp SL115
to add the camera system check & review.

The camera solution will be a standard
part on the slit lamp!

The camera system is designed and engineered
especially for SL115 type.



Easy mounting

Remove the ocular, mount the camera system, replace the optics and start to work.



Before



Mounting on slit lamp included yellow filter.



check & review



Finished.

Just „switch over“

After assembly and the software routine check & review will be prepared for every lighting situation. In a short time, default settings („full eye“, „slit“ or e.g. „fluorescence“) can be used an switched with the buttons in software to reproduce great images. To accent the depth of field a full usable iris shutter is included. Our mission: simplify the work flow and generate time between optican and patient.

check & review on SL115





High resolution images to convince.

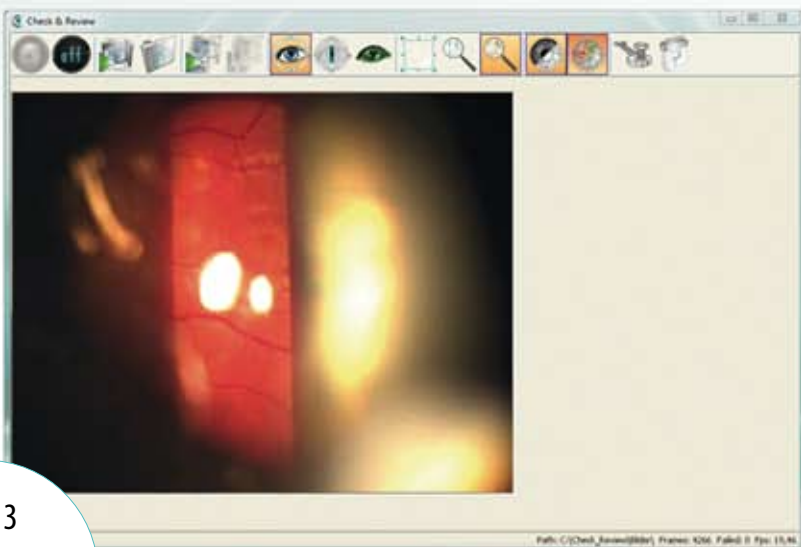


With the enormous light sensitivity of camera system check & review shows high-resolution images detailed in every points. The camera type on SL120 systems contained a disengageable beamsplitter.

Easy mounting and start working!



Screenshot software



Easy mounting

Remove the ocular, mount the camera system, replace the optics and start to work.



Before



disassemble oculars



check & review



Finished.



Different mounting
for yellow filter
or without.



assemble yellow filter



Perfectly integrated

The digital image and video documentation at the slit lamp is the basis for a comprehensive follow-up and illustrated diagnoses also for the patient and allows a professional basis for discussion especially for cases with intense eyes irregularities or diseases or testing the seating behavior of contact lenses.

The intuitive operating concept and the selected camera parameters allowed rich in detail images and video recording very quickly.

check & review on SL120.





Higher operating comfort explains itself.



Based on the lines of the slit lamp, the video system is perfectly integrated into the beam path of the SL130.

Set to the different patient management systems check & review has individual configuration options in software to work with different kind of patient data base.



Easy mounting

Remove the ocular, mount the camera system, replace the optics and start to work.



Before



Disassembly oculars



check & review



Finished

In using a yellow filter the camera system will be mounted between filter and oculars.

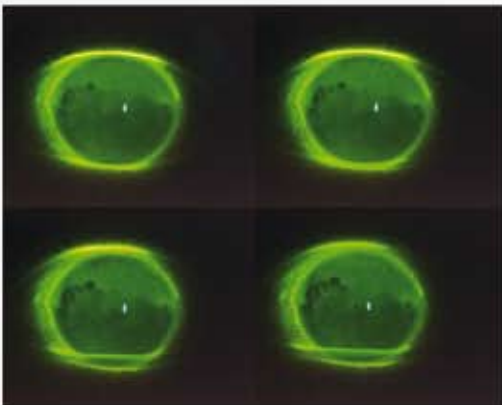


Mount yellow filter



Fluorescence image

History of the lachrymal film



Even under difficult lighting conditions optimal results with

check & review on SL130.





Play it safe in every second.



The digital imaging system check & review is in the Live View capability up to 25 frames per second, ideal for video recording on operating microscope.



check & review mounted on a beam splitter

Easy mounting

Remove the ocular, mount the camera system, replace the optics and start to work.

Mounted check
& review camera
system direct on
a beam splitter.
e.g. operating
microscope



With network connection

With the optional network camera
transmit over longer distances up to 90m
in standalone network system.

With correct beam splitter multiple camera
systems can be used simultaneously at the
slit lamp or the operating microscope.

To be convinced of the authenticity of the
colors and detail of the recordings.



Something for the eye, the hand and the foot.



LED surround lighting with diffuser filter is designed to complement the slit lamp illumination. The operation is controlled via USB.



The optional hand switch is programmable and is the ideal partner for the „check & review“ system. Operation is via USB.



The footswitch is included with the camera system always. Operation is via USB.

Technical data camera system

Resolution	High Quality
Pixel size	5,30 µm, square
Resolution depth	10 Bit
Interface	USB 2.0, max. 5m GigE, max. 90m
Frame rate	max. 25 fps (frames per second) with full resolution
Image format	jpg
Video file	avi
Type of sensor	CMOS
Sensor size	1/1,8"
Shutter system	Global and Rolling
Weight max.	700 g
Dimensions	151mm x 77mm x 55mm
Operating mode	continuous operation

Hardware

Processor	Pentium V or higher
Clock speed (CPU)	2 x 2,4 GHz
Main memory (RAM)	4 GB
Disk Space	160 GB
Drive	CD_Rom/DVD
Display	19" with 1280x1024
USB- host controller	USB 2.0 High Speed Intel® or NVIDIA® nForce Mainboard chipset
Graphics	AGP-/PCIe Microsoft DirectX Runtime 9.0c
working system	Windows 7 32- or 64-Bit Windows Vista 32- or 64-Bit (Service pack 1) Windows XP 32-Bit (Service Pack 3)

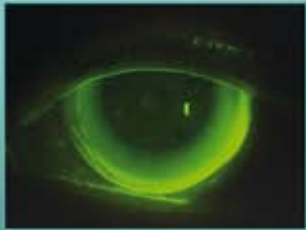




Available for many slit lamp systems e.g.
SL115, SL120, SL130, 30SL M, 10SL O, BQ900,
Zeiss beam splitter and operating microscope.



Individual camera parameters to your
slit lamp system and working area.



We configure check & review camera
system personally to your slit lamp!

To use the check & review camera system
on your slit lamp or beam splitter an
PC or laptop system is required.

Wagner & Guder UG
haftungsbeschränkt & Co.KG

Dorfstraße 57
D-99510 Hermstedt / Thuringia

Management:
Stefan Guder, engineer
Ulf Wagner

Phone: +49 (0) 36 44 / 51 55 61
Fax: +49 (0) 36 44 / 51 55 63

Homepage: www.wagner-guder-medical.com
Shop: www.praxis-optikerbedarf.de
Product page: www.check-review.de

Tax-No.: 162/167/57800
VAT-No.: DE 266425446
HRA: 501527
Jurisdiction: Jena

Email: info@wagner-guder.com



Authorized dealer



This project is part-financed by
the European Union and the
Federal State of Thuringia.

